

SDGs In The Movie

Group member:

412141266 蕭澤堯 Howard

412141254 周靖嵐 Andrew

412141228 李文哲 Leo

412160418 何沛宸 Chanel

Gender equality



Jan

Feb

Mar

Abr

May

Jun

Jul



Aug

Sep

Oct

Nov

Dec





5 GENDER EQUALITY



THE IMITATION GAME

A stylized illustration of a stage. At the top, red curtains are pulled back. Two white columns with brown capitals and bases stand on either side of the center. A spotlight from the top right illuminates the center of the stage. The background is a light yellow gradient.

01

Motivation

Jan

Feb

Mar

Abr

May

Jun

Jul

<

Aug

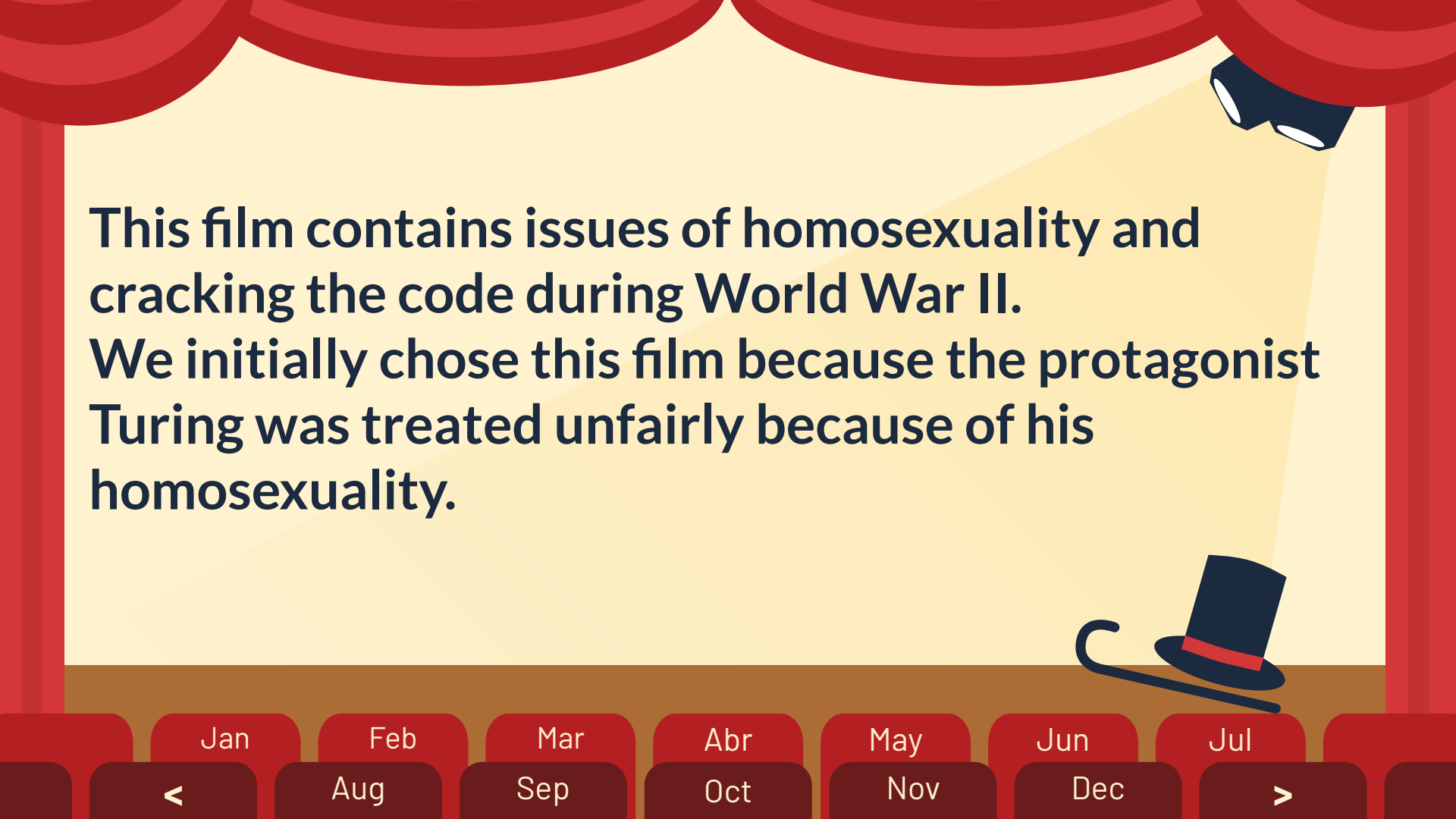
Sep

Oct

Nov

Dec

>

A stylized illustration of a theater stage. At the top, there are red curtains with a scalloped edge. A spotlight from the top right corner shines a yellow beam of light onto the center of the stage. The stage floor is a light brown color. In the bottom right corner of the stage, there is a dark blue top hat with a red band and a matching cane leaning against it. The background behind the text is a light yellow color.

This film contains issues of homosexuality and cracking the code during World War II. We initially chose this film because the protagonist Turing was treated unfairly because of his homosexuality.

Jan

Feb

Mar

Abr

May

Jun

Jul



Aug

Sep

Oct

Nov

Dec





02

The Cast

Jan

Feb

Mar

Abr

May

Jun

Jul

<

Aug

Sep

Oct

Nov

Dec

>

The Director

Morten Tyldum

Norwegian film director.

Won 8 nominations at the 87th Academy Awards

Graduated from the School of Visual Arts

Originally wanted to be a musician



Jan

Feb

Mar

Abr

May

Jun

Jul

<

Aug

Sep

Oct

Nov

Dec

>

The Cast

Benedict Timothy Carlton Cumberbatch

A British actor.

Acting tentacles involve TV series, movies and theaters.

Best known for "The Hawking Story"

Performs *Alan Turing* in "The Imitation game"



Jan

Feb

Mar

Abr

May

Jun

Jul

<

Aug

Sep

Oct

Nov

Dec

>

The Cast

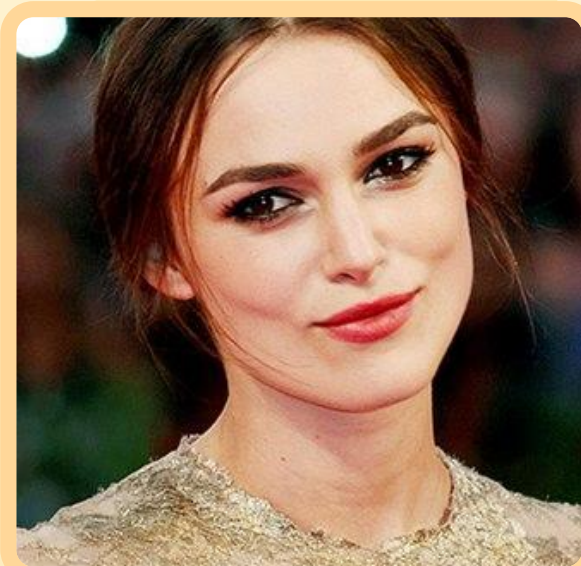
Keira Christina Knightley

An English actress who acting in Hollywood movies.

Started her acting career as a child.

Starring in "I Love Beckham" ,"Fantastic Voyage: The Curse of the Pirates of the Ship".

Performs *Joan Clarke* in "The Imitation game"



Jan

Feb

Mar

Abr

May

Jun

Jul



Aug

Sep

Oct

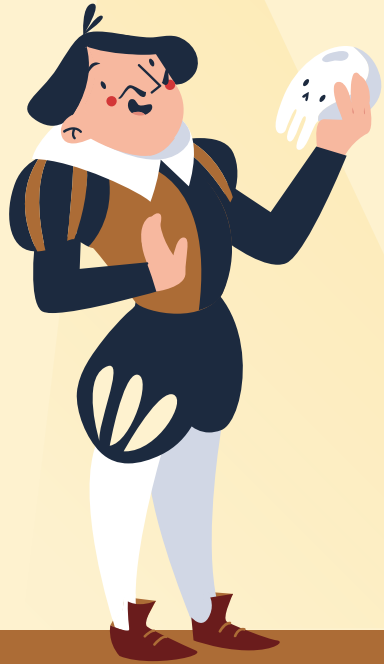
Nov

Dec



03 Content





During World War II,
Britain was unable to crack
Germany's secret system "Enigma"

A stylized illustration of a theater stage. At the top, there are red curtains with a scalloped edge. A blue spotlight fixture is mounted on the right side of the curtains, casting a bright yellow beam of light across the stage. The stage floor is a solid brown color. In the foreground, the tops of several rows of red theater seats are visible, arranged in a perspective view.

Alan Turing

Sometimes it's the people who no one imagines anything of, who do the things that no one can imagine.

A stylized illustration of a theater stage. At the top, there are red curtains with a scalloped edge. A blue spotlight fixture is mounted on the right side of the curtains, casting a bright yellow beam of light onto the center of the stage. The stage floor is a solid brown color. In the foreground, the tops of several rows of red theater seats are visible, arranged in a perspective view.

Turing was appointed as the leader of the group

The small group developed a device to crack the "Enigma" code

A stylized illustration of a theater stage. A spotlight from the top left corner illuminates a yellow rectangular area on the stage. The stage is framed by red curtains at the top and sides. In the foreground, there are rows of red theater seats. The text is centered on the stage.

However...

Turing committed suicide



REFLECTION

A large yellow rectangular area with a red border at the top. The word "REFLECTION" is centered in red, serif font. Scattered around the word are several red, stylized icons of faces with different expressions (happy, sad, neutral).

Performance



Rehearsal

Jan

Feb

Mar

Abr

May

Jun

Jul



Aug

Sep

Oct

Nov

Dec



A stage with red curtains at the top. A spotlight from the top right illuminates the center. A trumpet is positioned in the lower right of the spotlight, with several musical notes floating around it. On the left, there are two white columns with brown capitals and bases. The floor is brown, and the bottom of the image shows the tops of red seats.

1. Do not bully or discriminate

2. Respect

3. Freedom

DATA from

https://en.wikipedia.org/wiki/The_Imitation_Game



Jan

Feb

Mar

Abr

May

Jun

Jul

<

Aug

Sep

Oct

Nov

Dec

>

JOB

Member	Job
蕭澤堯	Motivation
周靖嵐	Cast
李文哲	Content
何沛宸	Reflection

Thanks!



Please keep this slide for attribution

CREDITS: This presentation template was created by **Slidesgo**, including icons by **Flaticon**, infographics & images by **Freepik**

Jan

Feb

Mar

Abr

May

Jun

Jul



Aug

Sep

Oct

Nov

Dec

